

V koordinatni sistem (a) narišite po vrsti naslednje funkcije in napišite njihove zapise:

$$f(x) = x^2 \quad \textcircled{1}$$

$$h(x) = 2g(x) = 2(x^2 - 4) \quad \textcircled{3}$$

$$g(x) = f(x) - 4 = x^2 - 4 \quad \textcircled{2}$$

$$p(x) = |h(x)| = |2x^2 - 8|$$

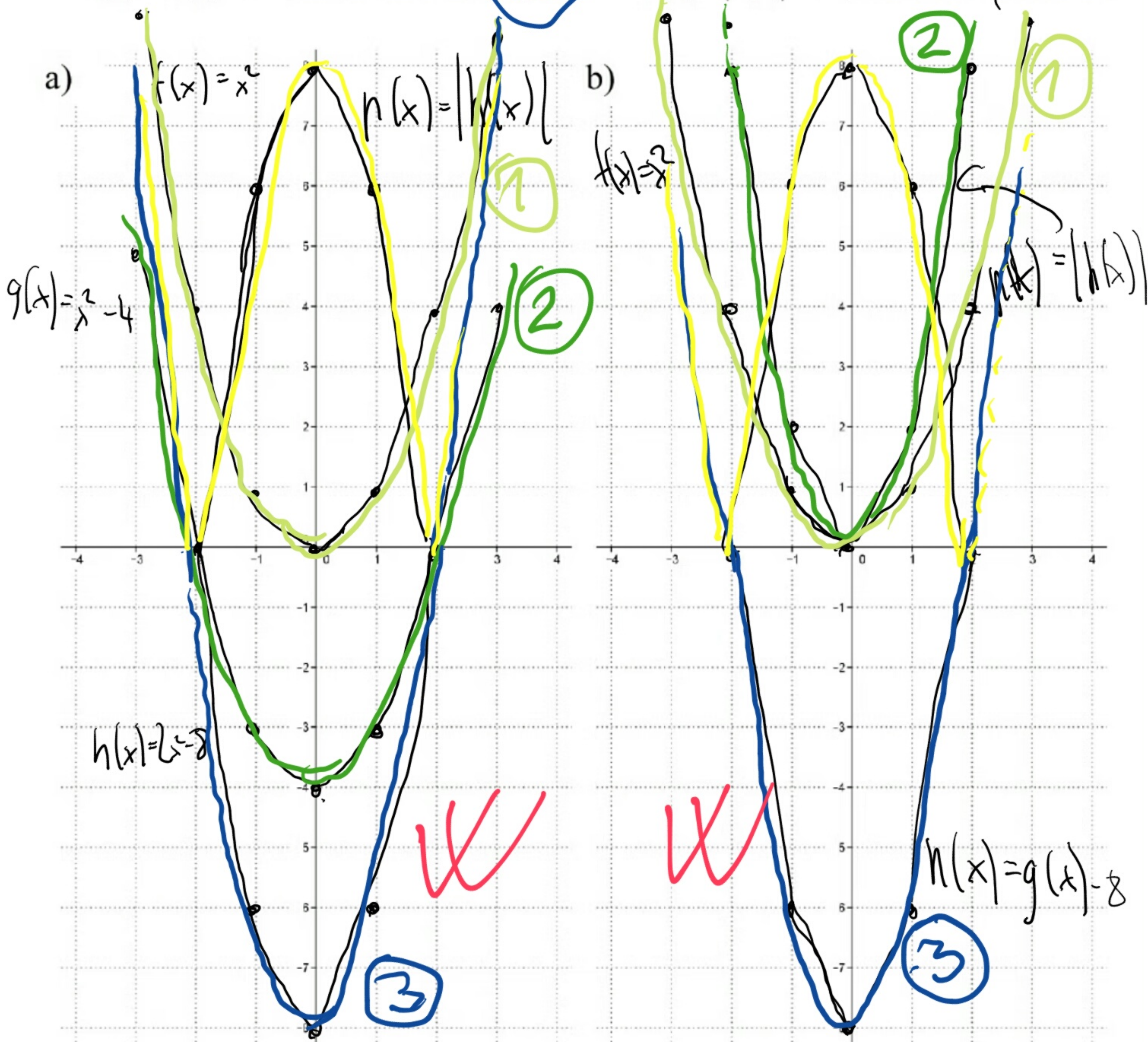
V koordinatni sistem (b) narišite po vrsti naslednje funkcije in napišite njihove zapise:

$$f(x) = x^2 \quad \textcircled{1}$$

$$h(x) = g(x) - 8 = 2x^2 - 8 \quad \textcircled{3}$$

$$g(x) = 2f(x) = 2x^2 \quad \textcircled{2}$$

$$p(x) = |h(x)| = |2x^2 - 8|$$



RUMENI GRAFI SO
ZADNJI — PRAVILNO
a in b pride ewako!